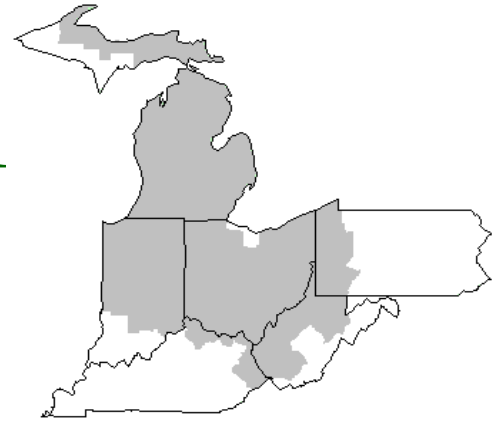


# Mideast Market Administrator's Bulletin



## Federal Order No. 33

Scott C. Jones, Market Administrator

Phone: (330) 225-4758 Toll Free: (888) 751-3220

Email: [mideastorder@fmmacleev.com](mailto:mideastorder@fmmacleev.com)

Webpage: [www.fmmacleev.com](http://www.fmmacleev.com)

**JANUARY 2025**

### 2024 Market Summary

Producer milk receipts pooled totaled 18.2 billion pounds on the Mideast Order during 2024 an increase of 420.7 million pounds, or 2.4 percent from 2023. During 2024, there were a little more than 4.0 billion pounds of milk voluntarily depooled. Monthly producer receipts ranged from a low of 1.27 billion pounds in February to a high of 1.76 billion pounds in November.

The number of producers pooled on the Mideast Order in 2024 averaged 3,355 per month, down 1.0 percent from a year earlier. Producer milk averaged 4.17 percent butterfat in 2024, ranging from a low of 4.01 percent in July to a high of 4.42 percent in December. The protein test averaged 3.25 percent for 2024. Protein tests ranged from a low of 3.14 percent in June and July, to a high of 3.38 percent in December. Other solids tests for producer milk averaged 5.77 percent for the year.

For the year, 37.8 percent of producer milk was utilized as Class I; 13.5 percent in Class II; 42.8 percent in Class III; and 5.9 percent in Class IV. The Class I utilization percentage had a low of 34.0 percent in November and a high of 42.0 percent in January. Class I milk totaled 6.9 billion pounds during 2024, up 7.4 percent from 2023. Class II milk totaled 2.5 billion pounds in 2024, an increase of 67.9 percent from 2023. Class III pooled pounds were 7.8 billion pounds in 2024, a decrease of 8.3% from 2023. Class IV milk totaled 1.1 billion pounds in 2024, a decrease of 24.3 percent from 2023.

The Class I price averaged \$22.35 per cwt for the year, an increase of \$1.15 per cwt from 2023. The Class I price had a low of \$19.99 per cwt in February and a high of \$25.17 per cwt in October. The Class II price averaged \$21.34 per cwt, an increase of \$1.24 per cwt from the prior year. It ranged from a low of \$20.04 per cwt in January to a high of \$22.40 per cwt in September. The Class III price averaged \$18.89 per cwt, an increase of \$1.87 per cwt from 2023. The Class III price ranged from a low of \$15.17 per cwt in January to a high of \$23.34 per cwt in September. The Class IV price averaged \$20.75 per cwt for the year, an increase of \$1.63 per cwt from a year ago. It was lowest in January at \$19.39 per cwt and was highest in September at \$22.29 per cwt.

The Statistical Uniform Price averaged \$20.25 per cwt for 2024 compared to \$18.69 per cwt in 2023. The Producer Butterfat Price averaged \$3.2885 per pound in 2024. This was an increase of \$0.3270 from 2023. The butterfat price was lowest in December at \$2.9104 per pound and was highest in September at \$3.6114 per pound. The Protein Price averaged \$1.8961 per pound in 2024. This

was a decrease of \$0.0090 from the previous year. The lowest price was in April at \$0.8345 per pound and was highest in October at \$3.3238 per pound. The Other Solids Price averaged \$0.3010 per pound, \$0.1334 higher than the 2023 average. The Producer Price Differential (PPD) averaged \$1.35 per cwt in 2024 with low of -0.67 per cwt in October and a high of \$2.77 per cwt in April.

### USDA Issues Final Rule on Amendments to the Federal Milk Marketing Orders

The U.S. Department of Agriculture (USDA) Agricultural Marketing Service (AMS) announced a final rule amending the uniform pricing formulas applicable in all 11 Federal milk marketing orders (FMMOs). The final rule was made available for viewing on Jan. 16, 2025, in the Federal Register and on AMS's National Federal Milk Marketing Order Pricing Formula Hearing webpage. It was published in the Federal Register on Jan. 17.

The final rule follows a 49-day national hearing held from Aug. 23, 2023, to Jan. 30, 2024, in Carmel, Indiana, where AMS heard testimony and received evidence on 21 proposals from the dairy industry. AMS issued a recommended decision on July 1, 2024, followed by its publication in the Federal Register on July 15, 2024, which began a 60-day public comment period.

(Continued on Page 3)

### December 2024 Pool Summary

#### Classification of Producer Milk

	<i>Pounds</i>	<i>Percent</i>
Class I	617,844,062	40.3
Class II	176,222,595	11.5
Class III	667,858,363	43.6
Class IV	71,495,297	4.6
Total	1,533,420,317	100.0

#### Producer Prices

Producer Price Differential	\$1.89 cwt
Butterfat Price	2.9104 /lb
Protein Price	1.9637 /lb
Other Solids Price	0.4493 /lb
Somatic Cell Adjustment Rate	0.00088 /cwt
Statistical Uniform Price	20.51

**ANNOUNCEMENT OF PRODUCER PRICES  
Federal Order No. 33**

**DECEMBER 2024**

**COMPUTATION OF PRODUCER PRICE DIFFERENTIAL**

	<u>POUNDS</u>	<u>BUTTERFAT</u>	<u>SKIM / PROTEIN</u>	<u>NONFAT SOLIDS</u>	<u>OTHER SOLIDS</u>	<u>PRICE</u>	<u>VALUE</u>
Class I Skim Value			603,156,836			\$12.98 / cwt	\$ 78,289,757.31
Class I Butterfat		14,687,226				3.1141 / lb	45,737,490.49
Class I Location Differential	617,844,062						(389,022.16)
Class II SNF Value				15,328,233		1.2744 / lb	19,534,300.10
Class II Butterfat		16,430,990				2.9174 / lb	47,935,770.22
Class III Protein Value			22,697,318			1.9637 / lb	44,570,723.32
Class III Other Solids Value					38,836,327	0.4493 / lb	17,449,161.72
Class III Butterfat		25,638,292				2.9104 / lb	74,617,685.06
Class IV SNF Value				5,803,917		1.2151 / lb	7,052,339.56
Class IV Butterfat		11,028,015				2.9104 / lb	32,095,934.87
Somatic Cell Value II / III / IV							1,495,249.30
<b>TOTAL PRODUCER MILK VALUE</b>	<b>1,533,420,317</b>	<b>58,357,780</b>	<b>46,647,519</b>		<b>82,914,098</b>		<b>\$ 368,389,389.78</b>
Overages					521,329.76		
Beginning Inventory & OS Charges					(143,939.76)		
<b>TOTAL ADJUSTMENTS</b>							<b>\$ 377,390.00</b>
<b>TOTAL HANDLER OBLIGATIONS</b>							<b>\$ 368,766,779.78</b>
Total Protein Value			51,848,995 lbs	@	\$1.9637		\$ (101,815,871.48)
Total Other Solids Value			88,620,624 lbs	@	0.4493		\$ (39,817,246.36)
Butterfat Value			67,784,523 lbs	@	2.9104		\$ (197,280,075.74)
Total Somatic Cell Values							(2,454,846.06)
<b>TOTALS</b>							<b>\$ 27,398,740.14</b>
Net Producer Location Adjustments							\$ 1,467,308.22
1/2 Unobligated Balance Producer Settlement Fund							871,000.00
Total - Divided by Total Pounds			1,533,437,645 lbs		1.9392408		\$ 29,737,048.36
Rate of Cash Reserve					(0.0492408)		(755,076.96)
<b>PRODUCER PRICE DIFFERENTIAL at Cuyahoga County, OH <sup>1</sup></b>			1,533,437,645		<b>\$ 1.89 /cwt</b>		<b>\$ 28,981,971.43</b>

**COMPONENT PRICES**

**COMPUTATION OF UNIFORM PRICE**

	<b>December</b>			<b>December</b>	
	<u>2024</u>	<u>2023</u>		<u>2024</u>	<u>2023</u>
Butterfat Price	\$2.9104 / lb	\$2.9778 / lb	Class III Price - 3.5% BF	\$18.62	\$16.04
Protein Price	1.9637 / lb	1.4499 / lb	Producer Price Differential*	<u>1.89</u>	<u>2.16</u>
Other Solids Price	0.4493 / lb	0.2242 / lb	Statistical Uniform Price	\$20.51	\$18.10
Somatic Cell Adjustment Rate	0.00088 / cwt	0.00081 / cwt			
Nonfat Solids Price <sup>2</sup>	1.2151 / lb	1.0144 / lb			

**CLASS PRICES**

**CLASSIFICATION OF PRODUCER MILK**

	<b>December</b>			<b>December</b>	
	<u>2024</u>	<u>2023</u>		<u>2024</u>	<u>2023</u>
Class I*	\$23.43	\$21.76	Class I	Product lbs. 617,844,062	Product lbs. 549,051,710
Class II	21.28	19.88	Class II	176,222,595	96,178,908
Class III	18.62	16.04	Class III	667,858,363	685,561,561
Class IV	20.74	19.23	Class IV	<u>71,495,297</u>	<u>26,035,215</u>
			Total	1,523,420,317	1,356,827,394

<sup>1</sup> Subject to Location Adjustment.

<sup>2</sup> Producers are not paid on this component.

**ORDER 33 MARKET SUMMARY**

The Producer Price Differential for the Mideast Marketing Area for December 2024 was \$1.89, and the Statistical Uniform Price was \$20.51 for the month. The Statistical Uniform Price is \$1.04 lower than last month and is \$2.31 higher than December 2023. The Producer Butterfat Price of \$2.9104 per pound decreased \$0.1509 from November and is down \$0.0674 from a year ago. The Protein Price of \$1.9637 is down \$0.3523 from last month and is up \$0.5138 from December 2023. The Other Solids Price in December was \$0.4493 per pound, an increase from last month's price of \$0.4049 and \$0.2251 higher than last December. The Somatic Cell Adjustment rate for December was

\$0.00088 per cwt. December producer receipts of 1.52 billion pounds were 13.5 percent lower than November and 12.3 percent higher than December 2023 production of 1.36 billion pounds. Producer milk allocated to Class I accounted for 40.3 percent of the total producer milk in December 2024, higher than 34.0 percent in November, and lower than the 40.5 percent in December 2023. A total of 3,395 producers were pooled on the Mideast Order compared to 3,490 producers pooled in December 2023. The market average content of producer milk was as follows: Butterfat 4.42%; Protein 3.38%; Other Solids 5.78% and Nonfat Solids 9.16%.

(Continued from Page 1)

A total of 128 comments were received, analysis of which was included in a final decision that was issued on November 12, 2024, and published in the Federal Register on December 2, 2024.

Following publication of the final decision, AMS administered and oversaw 11 referenda whereby producers whose milk was pooled on an FMMO in the selected representative month of January 2024 had the opportunity to vote in favor of or opposition to the FMMOs proposed to be amended.

This final rule announces that producers in each of the 11 FMMOs approved the following pricing formula amendments: Updating the skim milk composition factors to 3.3 percent true protein, 6.0 percent other solids and 9.3 percent nonfat solids, with a six-month delayed implementation. Removing 500-pound barrel cheddar cheese prices from the Dairy Product Mandatory Reporting Program survey. Updating Class III and Class IV manufacturing allowances to \$0.2519 for cheese, \$0.2272 for butter, \$0.2393 for nonfat dry milk and \$0.2668 for dry whey, all on a per pound basis, and the butterfat recovery factor to 91 percent.

Returning the base Class I skim milk price formula to the higher-of the advanced Class III or Class IV skim milk prices for the month. In addition, adoption of a Class I extended shelf life (ESL) adjustment for all ESL products equal to the average-of mover plus a 24-month rolling average adjuster with a 12-month lag.

Updating the Class I differential values to reflect the increased cost of servicing the Class 1 market.

The rule will be effective June 1, 2025, for all changes except for changes to skim milk composition factors will be implemented December 1, 2025. These changes will apply to milk marketed on or after these dates, as applicable, and those changes will be reflected in both advanced prices and pricing factors released before the start of the month and the class and component prices announced after the close of the month.

Copies of the final rule, educational materials and the entire hearing record can be found on the hearing webpage or obtained from USDA/AMS/Dairy Program; STOP 0225 - Rm. 2530; 1400 Independence Ave. SW, Washington, DC 20250-0225. Questions can be submitted to [fmmonohearing@usda.gov](mailto:fmmonohearing@usda.gov).

### November Milk Production Down 0.8 Percent

Milk production in the 24 major States during November totaled 17.2 billion pounds, down 0.8 Percent from November 2023. October revised production, at 18.0 billion pounds, was up 0.6 percent from October 2023. The October revision represented an increase of 32 million pounds or 0.2 percent from last month's preliminary production estimate.

Production per cow in the 24 major States averaged 1,948 pounds for November, 3 pounds below November 2023.

The number of milk cows on farms in the 24 major States was 8.92 million head for November, 32,000 head more than November 2023, but 2,000 head less than October 2024.

The Mideast Marketing Area has four states represented in the 23 major states used above. They are Indiana, Michigan, Ohio, and Pennsylvania. Milk production in these Mideast states during November totaled 2.6 billion pounds, up 16 million pounds or 0.6 percent from November 2023.

Production per cow in the Mideast states averaged 1,920 pounds for November, 19 pounds more than November 2023.

The number of cows on farms in the Mideast states was 1.3 million head, 5,000 head less than November 2023.

Released December 19, 2024, by the National Agricultural Statistics Service (NASS), Agricultural Statistics Board, United States Department of Agriculture (USDA).

#### Bulletin WebPage Edition

[www.fmmaclev.com](http://www.fmmaclev.com)

#### Featured this month are:

- Statistical Uniform Price
- Class and Component Prices
- National Product Prices

### Weighted Averages - Butterfat, Protein, Other Solids, Somatic Cell Count by State

Federal Order No. 33

State	November 2024							November 2023				
	Number of Producers	Pounds of Milk (000)	-----Weighted Averages-----				Pounds of Milk (000)	-----Weighted Averages-----				
			Butterfat	Protein	Other Solids	SCC (000)	Butterfat	Protein	Other Solids	SCC (000)		
Michigan	719	911,541	4.29	3.34	5.78	159	711,445	4.23	3.32	5.78	150	
Ohio	1,159	399,939	4.25	3.33	5.71	179	364,326	4.16	3.30	5.72	176	
Indiana	580	260,777	4.28	3.35	5.81	189	229,111	4.22	3.33	5.86	181	
New York	121	48,973	4.59	3.43	5.88	177	37,391	4.49	3.41	5.96	179	
Pennsylvania	649	74,835	4.27	3.28	5.67	216	77,048	4.23	3.24	5.66	203	
Other	166	65,670	4.50	3.40	5.76	178	65,680	4.35	3.35	5.76	157	
Total/Average *	3,394	1,761,735	4.29	3.34	5.77	171	1,485,001	4.23	3.31	5.78	165	

\* Totals may not add due to rounding. Data provided on a one month delay basis and includes only milk from these states pooled on the Mideast order.



**United States  
Department of  
Agriculture**

PRSR STD  
U.S. POSTAGE  
PAID  
Cleveland, Ohio  
Permit No. 2511

**Mideast Market Administrator Bulletin**  
1325 Industrial Parkway North  
P.O. Box 5102  
Brunswick, Ohio 44212

POSTMASTER: Time Sensitive Material - Deliver Promptly

The U.S. Department of Agriculture (USDA) prohibits discrimination in all its programs and activities on the basis of race, color, national origin, age, disability, and where applicable, sex (including gender identity and expression), marital status, familial status, parental status, religion, sexual orientation, political beliefs, genetic information, reprisal, or because all or part of an individual's income is derived from any public assistance program. (Not all prohibited bases apply to all programs.) Persons with disabilities who require alternative means for communication of program information (Braille, large print, audiotape, etc.) should contact USDA's TARGET Center at (202) 720-2600 (voice and TDD).

To file a complaint of discrimination, write USDA, Assistant Secretary for Civil Rights, Office of the Assistant Secretary for Civil Rights, 1400 Independence Avenue, S.W., Stop 9410, Washington, D.C. 20250-9410, or call (866) 632-9992 (English) or (800) 877-8339 (TDD) or (866) 377-8642 (English Federal-relay) or (800) 845-6136 (Spanish Federal-relay). USDA is an equal opportunity provider and employer.

**FEDERAL ORDER DATA  
December 2024**

Marketing Area <sup>1/</sup>	Producer Milk		Class I	Producer Price Differential (per cwt.)	Statistical Uniform Price (per cwt.)
	Total (000)	Class I (000)	Percent %		
FO 1 Northeast - (Boston)	2,273,965	674,697	29.7	2.85	21.47
FO 5 Appalachian - (Charlotte)	462,838	318,865	68.9	<sup>2/</sup>	23.43
FO 6 Florida - (Tampa)	216,676	173,335	80.0	<sup>2/</sup>	25.44
FO 7 Southeast - (Atlanta)	297,971	231,212	77.6	<sup>2/</sup>	24.18
FO 30 Upper Midwest - (Chicago)	2,077,772	162,852	7.9	0.36	18.98
FO 32 Central - (Kansas City)	1,169,699	362,568	31.0	1.33	19.95
<b>FO 33 Mideast - (Cleveland)</b>	<b>1,533,420</b>	<b>617,844</b>	<b>40.3</b>	<b>1.89</b>	<b>20.51</b>
FO 51 California - (Los Angeles)	1,776,731	413,109	23.3	1.37	19.99
FO 124 Pacific Northwest - (Seattle)	580,916	128,689	22.2	1.32	19.94
FO 126 Southwest - (Dallas)	1,116,471	328,862	29.5	1.93	20.55
FO 131 Arizona - (Phoenix)	333,878	117,865	35.3	<sup>2/</sup>	21.12

<sup>1/</sup> Names in parentheses are principal points of markets.

<sup>2/</sup> Producers in these markets are paid on the basis of a uniform skim and butterfat price.

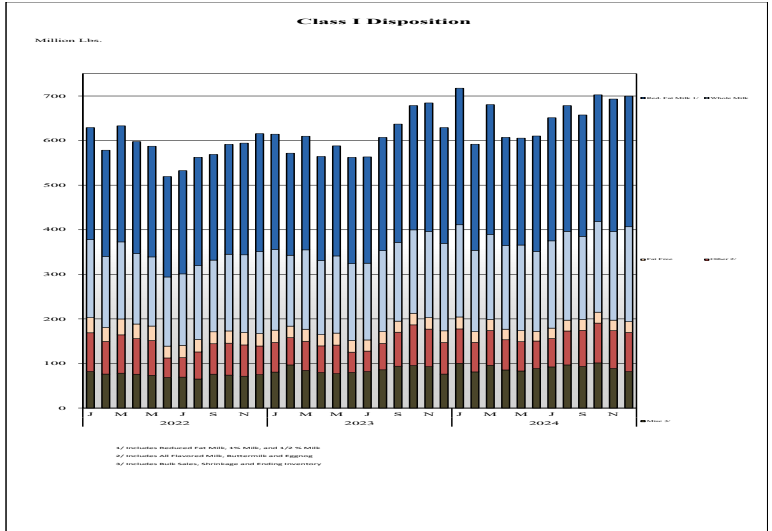
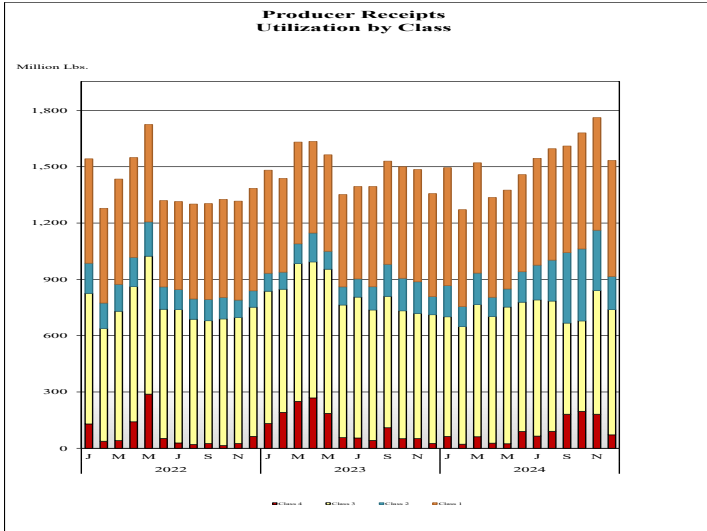
**MINIMUM PARTIAL PAYMENT PRICE FOR JANUARY 2025 .....\$18.62/cwt.**



# Mideast Market Administrator's Bulletin

Federal Order No. 33 Supplement  
January 2025

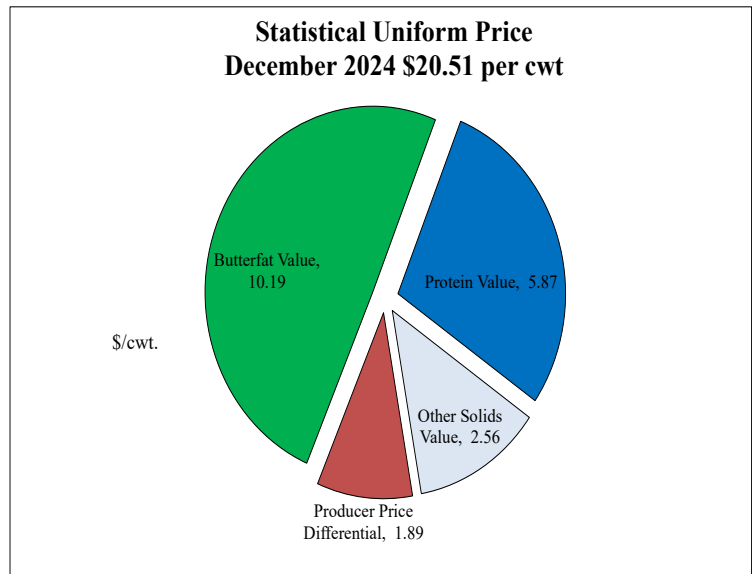
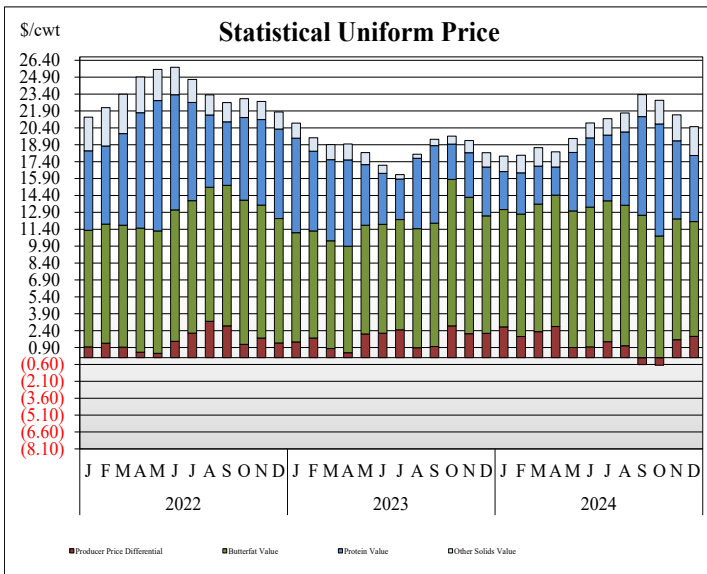
## PRODUCER MILK CLASSIFICATION



**Producer Receipts:** Producer receipts for the Mideast Order totaled 1.53 billion pounds in December 2024. The pounds allocated to Class I represented 40.3 percent of the total pounds. Producer receipts decreased 228 million pounds compared to November 2024, and were up 177 million pounds from the prior year.

**Class I Pounds:** Class I Disposition for the Mideast Order totaled 699.7 million pounds in December 2024, up 70.6 million pounds from December 2023. Finished products include 213 million pounds used for whole milk, 293 million pounds of reduced fat and low fat milk, and 24 million pounds of fat free (skim) milk.

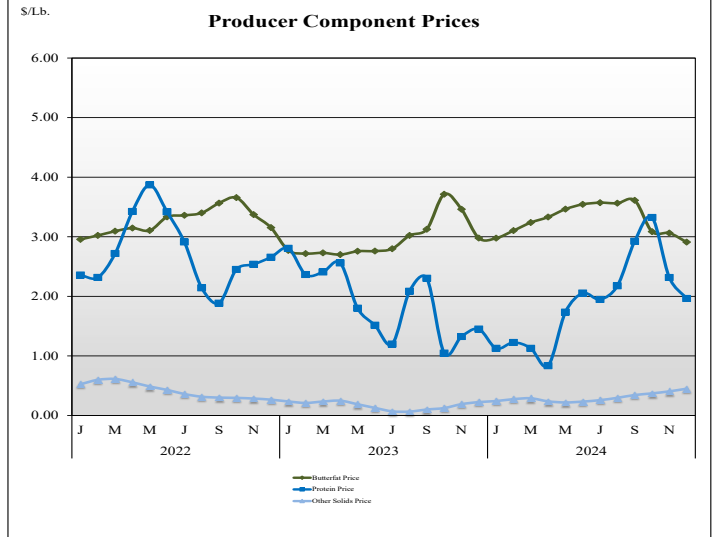
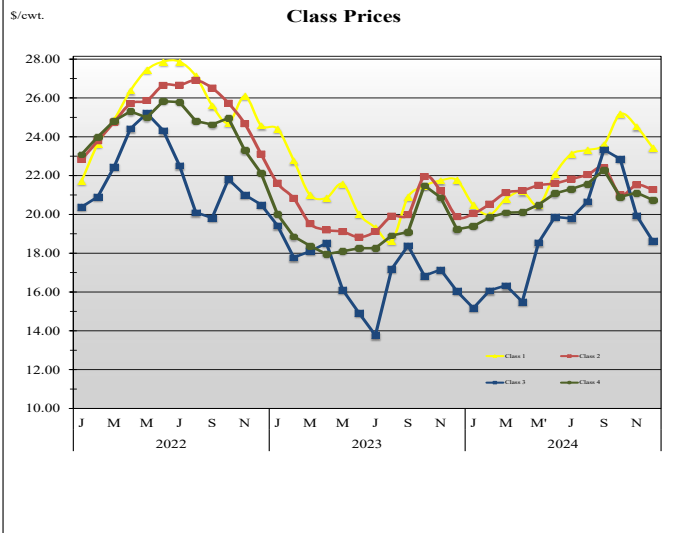
## STATISTICAL UNIFORM PRICE



**Statistical Uniform Price:** The Mideast Federal Order Statistical Uniform Price (SUP) at Cuyahoga County, OH was \$20.51 per cwt for December 2024. The December 2024 SUP was \$2.31 per cwt higher than the December 2023 SUP. The December 2024 SUP is \$1.04 per cwt lower than the November 2024 SUP.

**December 2024 Statistical Uniform Price:** Using the Class III Price formula at 3.5% BF, the component values for the December 2024 SUP are: \$5.87 per cwt for protein, \$10.19 per cwt for butterfat and \$2.56 per cwt for other solids. Also included in the SUP is the \$1.89 per cwt producer price differential. (May not add to total due to rounding.)

## CLASS AND COMPONENT PRICES



## WEIGHTED AVERAGE NATIONAL PRODUCT PRICES

