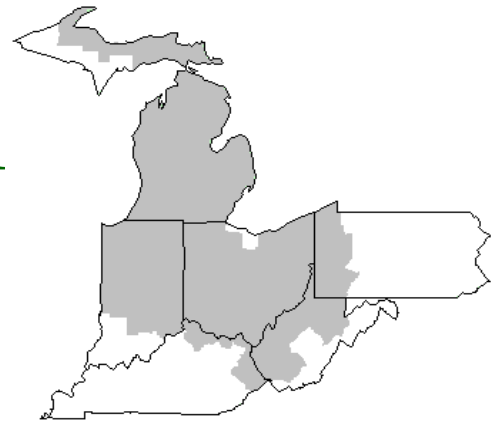


# Mideast Market Administrator's Bulletin



## Federal Order No. 33

Sharon R. Uther, Market Administrator

Phone: (330) 225-4758 Toll Free: (888) 751-3220

Email: [clevelandma1@sprynet.com](mailto:clevelandma1@sprynet.com)

WebPage: [www.fmmaclev.com](http://www.fmmaclev.com)

**APRIL 2022**

## Recent Developments in Dairy Markets

Dairy exports on a milk-fat milk-equivalent basis totaled 822 million pounds in January, 121 million higher than January 2021. On a skim-solids milk-equivalent basis, January exports totaled 3.408 billion pounds, 185 million below January 2021. There were several products in January with notable year-over-year declines from January 2021, including exports of 26.7 million pounds dry whey (-13.6 million), 21.5 million pounds of whey protein concentrate (-2.4 million), 131.0 million pounds of dry skim milk products (-7.6 million), and 4.4 million pounds of dry whole milk (-0.5 million).

Dairy imports on a milk-fat basis totaled 430 million pounds in January, 56 million higher than January 2021. On a skim-solids basis, January imports totaled 500 million pounds, 50 million higher than January 2021. Butter imports in January totaled 6.4 million pounds, 3.4 million higher than January 2021 but 3.6 million below December 2021. January cheese imports totaled 21.3 million pounds, 0.2 million higher than January 2021 but 3.8 million below December 2021. Imports of milk protein products<sup>2</sup> totaled 25.5 million pounds in January, 3.7 million higher than January 2021 and 9.1 million higher than December 2021.

Ending stocks at the end of January on a milk-fat basis totaled 14.780 billion pounds, 13.0 percent lower than the end of January 2021. On a skim-solids basis, ending stocks totaled 11.219 billion pounds, 0.6 percent lower than the end of January 2021. January ending stocks for butter, dry skim milk products, and dry whey were down from January 2021 by 33.3 percent, 15.1 percent, and 16.3 percent, respectively. January ending stocks for cheese were up 2.6 percent from January 2021.

## Dairy Forecasts for 2022

Milk production for 2022 is projected at 226.0 billion pounds, 1.2 billion lower than last month's forecast and a decrease of 0.3 billion pounds from 2021. This would be the first year-over-year decrease since 2009. Milk cows are projected to average 9.355 million head in 2022, 5,000 lower than last month's forecast and a year-over year decline of 93,000 head. Relatively low numbers of replacement heifers, higher expected cull-cow prices, and higher expected production costs will likely contribute to the reduction in milk cow numbers. Milk per cow is projected to average 24,160 pounds per head, 105 pounds down from the previous forecast and a year-over year increase of 212 pounds. This projected slowing in growth in

milk per cow is associated with anticipated higher feed costs and an expected reduction in feed nutritive value early in the year due to corn silage quality issues.

Dairy export projections for 2022 are adjusted lower due to relatively low exports in January and higher expected U.S. dairy prices. Lower exports are expected for several dairy categories including whey products, dry skim milk products, lactose, and dry whole milk. The forecast for 2022 dairy exports on a milk-fat basis has been adjusted to 10.9 billion pounds, 0.1 billion lower than last month's forecast. On a skim-solids basis, the 2022 dairy export forecast has been adjusted to 49.8 billion pounds, 1.4 billion lower than last month's projection.

Based on recent import data, lower imports of cheese, butter, fluid milk, and cream are expected. However, recent data indicate that imports of milk protein products, condensed and evaporated milk, and other miscellaneous dairy products may be higher than previously expected. On a milk-fat basis, dairy import projections for 2022 have been lowered to 6.8 billion pounds (-0.1 billion). On a skim-solids basis, dairy imports have been increased to 5.8 billion pounds (+0.1 billion pounds).

Livestock, Dairy, and Poultry Outlook, LDP-M-333, March 15, 2022 USDA, Economic Research Service

## April 2022 Pool Summary

### Classification of Producer Milk

|           | <i>Pounds</i> | <i>Percent</i> |
|-----------|---------------|----------------|
| Class I   | 560,453,158   | 39.1           |
| Class II  | 143,259,519   | 10.0           |
| Class III | 690,042,462   | 48.1           |
| Class IV  | 40,493,481    | 2.8            |
| Total     | 1,434,248,620 | 100.0          |

### Producer Prices

|                              |              |
|------------------------------|--------------|
| Producer Price Differential  | \$0.93 /cwt  |
| Butterfat Price              | 3.0935 /lb   |
| Protein Price                | 2.7182 /lb   |
| Other Solids Price           | 0.6131 /lb   |
| Somatic Cell Adjustment Rate | 0.00103 /cwt |
| Statistical Uniform Price    | 23.38 /cwt   |

**ANNOUNCEMENT OF PRODUCER PRICES**

Federal Order No. 33

**MARCH 2022****COMPUTATION OF PRODUCER PRICE DIFFERENTIAL**

|  | <u>POUNDS</u> | <u>BUTTERFAT</u> | <u>SKIM /<br/>PROTEIN</u> | <u>NONFAT<br/>SOLIDS</u> | <u>OTHER<br/>SOLIDS</u> | <u>PRICE</u>  | <u>VALUE</u>        |
|--|---------------|------------------|---------------------------|--------------------------|-------------------------|---------------|---------------------|
| Class I Skim Value   |               |                  | 548,701,729               |                          |                         | \$14.89 / cwt | \$ 81,701,687.44    |
| Class I Butterfat  |               | 11,751,429       |                           |                          |                         | 3.0038 / lb   | 35,298,942.42       |
| Class I Location Differential  | 560,453,158   |                  |                           |                          |                         |               | (334,128.44)        |
| Class II SNF Value   |               |                  |                           | 12,087,734               |                         | 1.6011 / lb   | 19,353,670.90       |
| Class II Butterfat   |               | 15,225,043       |                           |                          |                         | 3.1005 / lb   | 47,205,245.81       |
| Class III Protein Value  |               |                  | 22,410,077                |                          |                         | 2.7182 / lb   | 60,915,071.30       |
| Class III Other Solids Value   |               |                  |                           |                          | 39,956,115              | 0.6131 / lb   | 24,497,094.10       |
| Class III Butterfat  |               | 26,652,239       |                           |                          |                         | 3.0935 / lb   | 82,448,701.35       |
| Class IV SNF Value   |               |                  |                           | 3,395,634                |                         | 1.6113 / lb   | 5,471,385.06        |
| Class IV Butterfat   |               | 4,729,069        |                           |                          |                         | 3.0935 / lb   | 14,629,374.97       |
| Somatic Cell Value II / III / IV                                       |               |                  |                           |                          |                         |               | 1,657,884.43        |
| <b>TOTAL PRODUCER MILK VALUE</b>                                       | 1,434,248,620 | 58,357,780       | 46,647,519                |                          | 82,914,098              |               | \$ 372,844,929.34   |
| Overages   |               |                  |                           |                          | 32,115.19               |               |                     |
| Beginning Inventory & OS Charges                                       |               |                  |                           |                          | (68,712.52)             |               |                     |
| <b>TOTAL ADJUSTMENTS</b>   |               |                  |                           |                          |                         |               | \$ (36,597.33)      |
| <b>TOTAL HANDLER OBLIGATIONS</b>                                       |               |                  |                           |                          |                         |               | \$ 372,808,332.01   |
| Total Protein Value  |               |                  | 46,647,519 lbs            | @                        | \$2.7182                |               | \$ (126,797,286.15) |
| Total Other Solids Value   |               |                  | 82,914,098 lbs            | @                        | 0.6131                  |               | (50,834,633.47)     |
| Butterfat Value  |               |                  | 58,357,780 lbs            | @                        | 3.0935                  |               | (180,529,792.44)    |
| Total Somatic Cell Values  |               |                  |                           |                          |                         |               | (2,691,561.19)      |
| <b>TOTALS</b>  |               |                  |                           |                          |                         |               | \$ 11,955,058.76    |
| Net Producer Location Adjustments                                      |               |                  |                           |                          |                         |               | \$ 1,225,868.32     |
| 1/2 Unobligated Balance Producer Settlement Fund                       |               |                  |                           |                          |                         |               | 809,000.00          |
| Total - Divided by Total Pounds  |               |                  | 1,434,248,620 lbs         |                          | 0.9754185               |               | \$ 13,989,927.08    |
| Rate of Cash Reserve   |               |                  |                           |                          | (0.0454185)             |               | (651,414.21)        |
| <b>PRODUCER PRICE DIFFERENTIAL at Cuyahoga County, OH <sup>1</sup></b> |               |                  | 1,434,248,620             |                          | \$ 0.93 /cwt            |               | \$ 13,338,512.87    |

**COMPONENT PRICES**

March

**COMPUTATION OF UNIFORM PRICE**

March

|                                  | <u>2022</u>   | <u>2021</u>   |                              | <u>2022</u> | <u>2021</u>   |
|----------------------------------|---------------|---------------|------------------------------|-------------|---------------|
| Butterfat Price                  | \$3.0935 / lb | \$1.7176 / lb | Class III Price - 3.5% BF    | \$22.45     | \$16.15       |
| Protein Price                    | 2.7182 / lb   | 2.6954 / lb   | Producer Price Differential* | <u>0.93</u> | <u>(0.47)</u> |
| Other Solids Price               | 0.6131 / lb   | 0.3652 / lb   | Statistical Uniform Price    | \$23.38     | \$15.68       |
| Somatic Cell Adjustment Rate     | 0.00103 / cwt | 0.00080 / cwt |                              |             |               |
| Nonfat Solids Price <sup>2</sup> | 1.6113 / lb   | 0.9396 / lb   |                              |             |               |

**CLASS PRICES**

March

**CLASSIFICATION OF PRODUCER MILK**

March

|           | <u>2022</u> | <u>2021</u> |                 | <u>2022</u>       | <u>2021</u>        |
|-----------|-------------|-------------|-----------------|-------------------|--------------------|
| Class I*  | \$24.88     | \$17.20     | Product lbs.    | Product lbs.      |                    |
| Class II  | 24.76       | 15.07       | Class I         | 560,453,158       | 578,737,874        |
| Class III | 22.45       | 16.15       | Class II        | 143,259,519       | 362,189,933        |
| Class IV  | 24.82       | 14.18       | Class III       | 690,042,462       | 253,769,138        |
|           |             |             | <u>Class IV</u> | <u>40,493,481</u> | <u>281,112,279</u> |
|           |             |             | Total           | 1,434,248,620     | 1,475,809,224      |

<sup>1</sup> Subject to Location Adjustment.<sup>2</sup> Producers are not paid on this component.**ORDER 33 MARKET SUMMARY**

The Producer Price Differential for the Mideast Marketing Area for March 2022 was \$0.93 and the Statistical Uniform Price was \$23.38 for the month. The Statistical Uniform Price is \$1.19 higher than last month, and is \$7.70 higher than March 2021.

The Producer Butterfat Price of \$3.0935 per pound increased \$0.0717 from February and is up \$1.3759 from a year ago. The Protein Price of \$2.7182 is up \$0.4014 from last month and is up \$0.0228 from March 2021. The Other Solids Price in March was \$0.6131 per pound, an increase from last month's price of \$0.5983 and \$0.2479 higher than last March. The Somatic Cell Adjustment rate for March was \$0.00103 per

cwt. March producer receipts of 1.43 billion pounds were 12.2 percent higher than February and 2.8 percent lower than March 2021 production of 1.48 billion pounds. Producer milk allocated to Class I accounted for 39.1 percent of the total producer milk in March 2022, lower than the 39.5 percent in February, and lower than the 39.2 percent in March 2021. A total of 3,333 producers were pooled on the Mideast Order compared to 3,586 producers pooled in March 2021.

The market average content of producer milk was as follows: Butterfat 4.07 %; Protein 3.25 %; Other Solids 5.78 % and Nonfat Solids 9.03 %.

## February 2022 Highlights

**Total cheese** output (excluding cottage cheese) was 1.11 billion pounds, 6.3 percent above February 2021 but 5.3 percent below January 2022.

**Italian type cheese** production totaled 470 million pounds, 6.0 percent above February 2021 but 6.7 percent below January 2022.

**American type cheese** production totaled 444 million pounds, 4.3 percent above February 2021 but 5.8 percent below January 2022.

**Butter** production was 184 million pounds, 1.4 percent below February 2021 and 5.4 percent below January 2022.

**Dry milk products** (comparisons in percentage with February 2021)  
Nonfat dry milk, human - 171 million pounds, down 6.9 percent.  
Skim milk powder - 29.6 million pounds, down 6.4 percent.

**Whey products** (comparisons in percentage with February 2021)  
Dry whey, total - 75.0 million pounds, down 0.4 percent.  
Lactose, human and animal - 92.9 million pounds, up 17.4 percent.  
Whey protein concentrate, total - 47.1 million pounds, up 25.7 percent.

**Frozen products** (comparisons in percentage with February 2021)  
Ice cream, regular (hard) - 52.3 million gallons, down 6.0 percent.  
Ice cream, lowfat (total) - 30.9 million gallons, down 7.6 percent.  
Sherbet (hard) - 2.51 million gallons, down 3.6 percent.  
Frozen yogurt (total) - 4.17 million gallons, up 1.8 percent.

*Released April 1, 2022, by the National Agricultural Statistics Service (NASS),  
Agricultural Statistics Board, United States Department of Agriculture (USDA).*

## February Milk Production Down 0.7 Percent

Milk production in the 24 major States during February totaled 16.7 billion pounds, down 0.7 Percent from February 2021. January revised production, at 18.2 billion pounds, was down 1.5 percent from January 2021. The January revision represented a decrease of 19 million pounds or 0.1 percent from last month's preliminary production estimate.

Production per cow in the 24 major States averaged 1,887 pounds for February, 3 pounds above February 2021.

The number of milk cows on farms in the 24 major States was 8.88 million head, 77,000 head less than February 2021, but 3,000 head more than January 2022.

The Mideast Marketing Area has four states represented in the 23 major states used above. They are Indiana, Michigan, Ohio, and Pennsylvania. Milk production in these Mideast states during February totaled 2.5 billion pounds, down 58 million pounds or 2.3 percent from February 2021.

Production per cow in the Mideast states averaged 1,835 pounds for February, 10 pounds more than February 2021.

The number of cows on farms in the Mideast states was 1.3 million head, 38,000 head less than February 2021.

Released March 21, 2022, by the National Agricultural Statistics Service (NASS),  
Agricultural Statistics Board, United States Department of Agriculture (USDA).

### Bulletin WebPage Edition

[www.fmmaclev.com](http://www.fmmaclev.com)

#### Featured this month are:

- Producer Milk Classification
- Statistical Uniform Price
- Class and Component Prices
- National Product Prices

## Weighted Averages - Butterfat, Protein, Other Solids, Somatic Cell Count by State Federal Order No. 33

| State           | Number of Producers | Pounds of Milk (000) | February 2021<br>-----Weighted Averages ----- |         |              |           | February 2020<br>-----Weighted Averages ----- |           |         |              |           |
|-----------------|---------------------|----------------------|---|---------|--------------|-----------|---|-----------|---------|--------------|-----------|
|                 |                     |                      | Butterfat                                     | Protein | Other Solids | SCC (000) | Pounds of Milk (000)                          | Butterfat | Protein | Other Solids | SCC (000) |
| Michigan        | 768                 | 648,251              | 4.11  | 3.31    | 5.78         | 154       | 539,698                                       | 4.04      | 3.29    | 5.81         | 154       |
| Ohio            | 1,156               | 333,711              | 4.16  | 3.30    | 5.76         | 177       | 331,648                                       | 4.07      | 3.25    | 5.76         | 169       |
| Indiana         | 565                 | 171,041              | 4.10  | 3.27    | 5.78         | 185       | 247,125                                       | 4.04      | 3.25    | 5.79         | 158       |
| Pennsylvania    | 575                 | 73,020               | 4.12  | 3.19    | 5.68         | 211       | 77,536  | 4.09      | 3.15    | 5.68         | 208       |
| New York        | 126                 | 41,284               | 4.24  | 3.30    | 5.90         | 191       | 65,625  | 4.22      | 3.31    | 5.89         | 167       |
| Other           | 143                 | 11,595               | 4.14  | 3.20    | 5.77         | 228s      | 20,880  | 3.87      | 3.16    | 5.75         | 219       |
| Total/Average * | 3,333               | 1,278,903            | 4.13  | 3.29    | 5.77         | 169       | 1,282,512                                     | 4.06      | 3.26    | 5.79         | 163       |

\* Totals may not add due to rounding. Data provided on a one month delay basis and includes only milk from these states *pooled* on the Mideast order.



**United States  
Department of  
Agriculture**

PRSR STD  
U.S. POSTAGE  
PAID  
Cleveland, Ohio  
Permit No. 2511

**Mideast Market Administrator Bulletin**  
1325 Industrial Parkway North  
P.O. Box 5102  
Brunswick, Ohio 44212

POSTMASTER: Time Sensitive Material - Deliver Promptly

The U.S. Department of Agriculture (USDA) prohibits discrimination in all its programs and activities on the basis of race, color, national origin, age, disability, and where applicable, sex (including gender identity and expression), marital status, familial status, parental status, religion, sexual orientation, political beliefs, genetic information, reprisal, or because all or part of an individual's income is derived from any public assistance program. (Not all prohibited bases apply to all programs.) Persons with disabilities who require alternative means for communication of program information (Braille, large print, audiotape, etc.) should contact USDA's TARGET Center at (202) 720-2600 (voice and TDD).

To file a complaint of discrimination, write USDA, Assistant Secretary for Civil Rights, Office of the Assistant Secretary for Civil Rights, 1400 Independence Avenue, S.W., Stop 9410, Washington, D.C. 20250-9410, or call (866) 632-9992 (English) or (800) 877-8339 (TDD) or (866) 377-8642 (English Federal-relay) or (800) 845-6136 (Spanish Federal-relay). USDA is an equal opportunity provider and employer.

**FEDERAL ORDER DATA  
March 2022**

| Marketing Area <sup>1/</sup>         | Producer Milk    |                  | Class I      | Producer Price Differential<br>(per cwt.) | Statistical Uniform Price<br>(per cwt.) |
|--------------------------------------|------------------|------------------|--------------|---|---|
|                                      | Total<br>(000)   | Class I<br>(000) | Percent<br>% |   |   |
| FO 1 Northeast - (Boston)            | 2,305,630        | 673,152          | 29.2         | \$2.29                                    | \$24.74                                 |
| FO 5 Appalachian - (Charlotte)       | 501,865          | 343,724          | 68.5         | <sup>2/</sup>                             | 25.86                                   |
| FO 6 Florida - (Tampa)               | 220,286          | 182,898          | 83.0         | <sup>2/</sup>                             | 27.77                                   |
| FO 7 Southeast - (Atlanta)           | 335,814          | 254,441          | 75.8         | <sup>2/</sup>                             | 26.42                                   |
| FO 30 Upper Midwest - (Chicago)      | 2,759,340        | 212,727          | 7.7          | 0.21                                      | 22.66                                   |
| FO 32 Central - (Kansas City)        | 1,334,889        | 380,818          | 28.5         | 0.70)                                     | 23.15                                   |
| <b>FO 33 Mideast - (Cleveland)</b>   | <b>1,434,249</b> | <b>560,453</b>   | <b>39.1</b>  | <b>0.93</b>                               | <b>23.38</b>                            |
| FO 51 California - (Los Angeles)     | 1,965,767        | 411,212          | 20.9         | 0.87                                      | 23.32                                   |
| FO 124 Pacific Northwest - (Seattle) | 665,894          | 144,011          | 21.6         | 1.04                                      | 23.49                                   |
| FO 126 Southwest - (Dallas)          | 1,190,259        | 340,977          | 28.7         | 1.28                                      | 23.73                                   |
| FO 131 Arizona - (Phoenix)           | 406,904          | 112,149          | 27.6         | <sup>2/</sup>                             | 24.66                                   |

<sup>1/</sup> Names in parentheses are principal points of markets.

<sup>2/</sup> Producers in these markets are paid on the basis of a uniform skim and butterfat price.

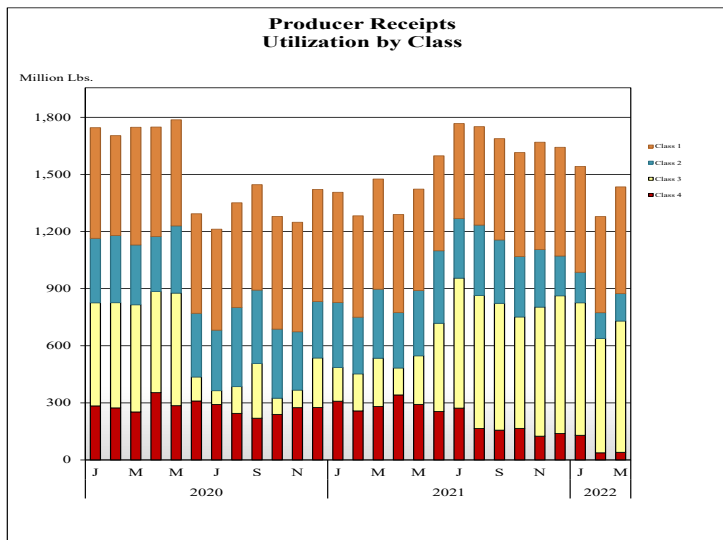
**MINIMUM PARTIAL PAYMENT PRICE FOR APRIL 2022.....\$22.45 /cwt.**



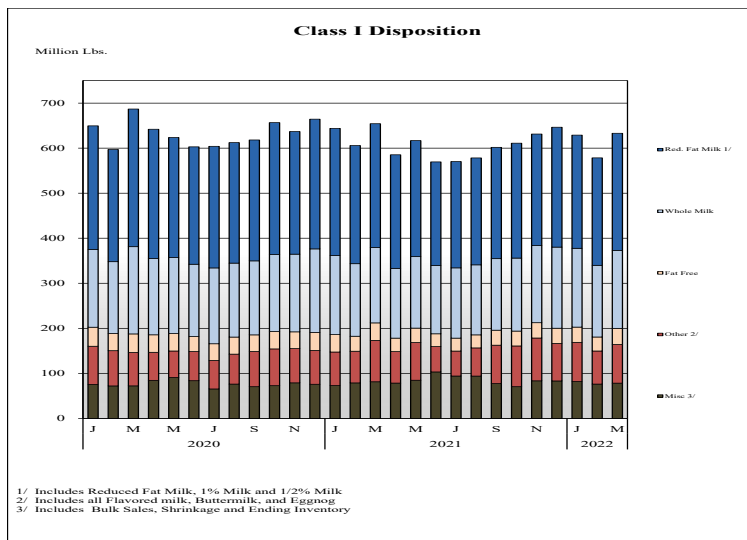
# Mideast Market Administrator's Bulletin

Federal Order No. 33 Supplement  
April 2022

## PRODUCER MILK CLASSIFICATION



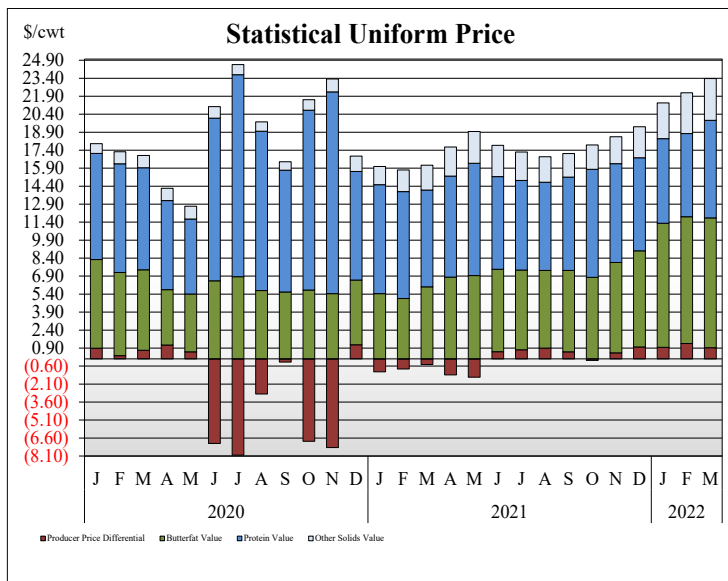
**Producer Receipts:** Producer receipts for the Mideast Order totaled 1.43 billion pounds in March 2022. The pounds allocated to Class I represented 39.1 percent of the total pounds. Producer receipts increased 158.1 million pounds compared to February 2022, and were down 41.6 million pounds from the prior year.



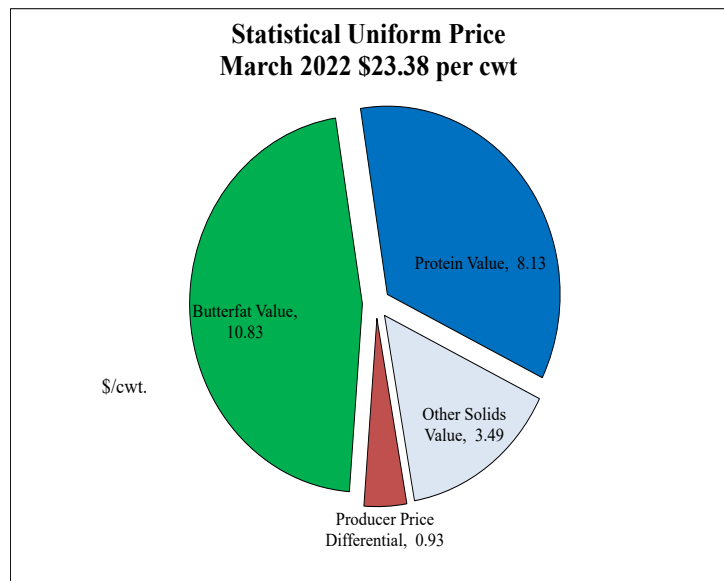
1/ Includes Reduced Fat Milk, 1% Milk and 1/2% Milk  
2/ Includes all Flavored milk, Buttermilk, and Eggnog  
3/ Includes Bulk Sales, Shrinkage and Ending Inventory

**Class I Pounds:** Class I Disposition for the Mideast Order totaled 633.0 million pounds in March 2022, down 21.3 million pounds from March 2021. Finished products include 172.9 million pounds used for whole milk, 206.0 million pounds of reduced fat and low fat milk, and 36.2 million pounds of fat free (skim) milk.

## STATISTICAL UNIFORM PRICE

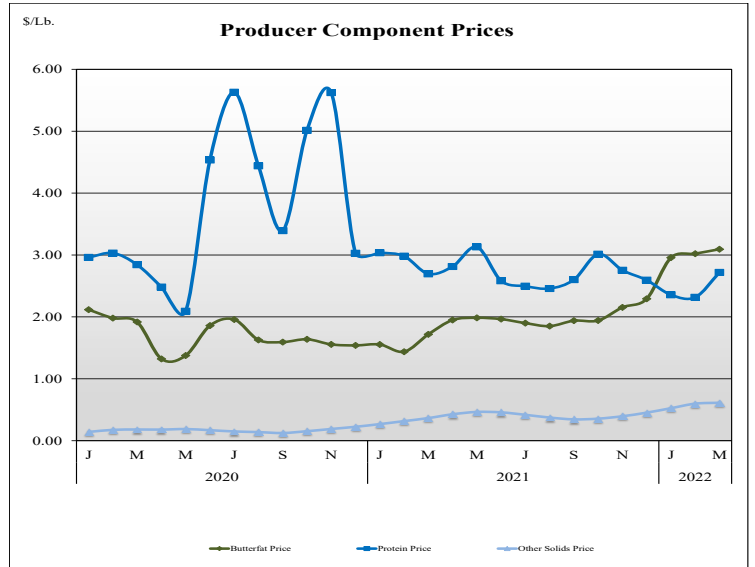


**Statistical Uniform Price:** The Mideast Federal Order Statistical Uniform Price (SUP) at Cuyahoga County, OH was \$23.38 per cwt for March 2022. The March 2022 SUP was \$7.70 per cwt higher than the March 2021 SUP. The March 2022 SUP is \$1.19 per cwt higher than the February 2022 SUP.



**March 2022 Statistical Uniform Price:** Using the Class III Price formula at 3.5% BF, the component values for the March 2022 SUP are: \$8.13 per cwt for protein, \$10.83 per cwt for butterfat and \$3.49 per cwt for other solids. Also included in the SUP is the -\$0.93 per cwt producer price differential. (May not add to total due to rounding.)

## CLASS AND COMPONENT PRICES



## WEIGHTED AVERAGE NATIONAL PRODUCT PRICES

